

Cover Photos: Eva Thoemke, Mitch Nicklas



THRIVING

**WINTER
2024**

The purpose of life, after all, is to live it, to taste experience to the utmost, to reach out eagerly and without fear for newer and richer experience.
-Eleanor Roosevelt



Mile Hi Church

It's different here.



FIND YOURSELF HERE

At Mile Hi, you'll find a church here. But my greatest hope is that you find yourself here.

When I have the honor of sharing a Sunday message, my prayer isn't that you leave thinking more like I do but that you have greater clarity around your own thoughts and feelings—about God, life, yourself, your relationships, and your reasons for living.

Beyond our Sunday services, there are many other paths to finding yourself.

Serving in our Make-A-Difference ministry, lifting-up the greater community.

Education and taking action with our Sacred Earth, Interfaith, and Diversity and Belonging initiatives.

Classes, youth and family programs, workshops, and support groups.

Or grab some materials that go along with our Back To Basics series online and do a self-study with yourself or a loved one.

I invite you to try something out and see if you feel a little more like yourself, who you want to be, or at least, on your way. Part of the joy for me in participating in Mile Hi Church is that it's a place where I can find myself again and again.



Josh Reeves
Lead Minister

Rev. Jackie's Quick and Easy Spinach Salad

Ingredients

- 1 bag or bunch of fresh spinach
- A few mandarin oranges. Cuties work great.
- Quarter of an onion thinly sliced
- Creamy French dressing or Asian sesame vinaigrette
- Bacon or hard boiled egg (optional)
- Parmesan

Directions

1. Combine the washed spinach torn into small pieces, mandarin oranges, sliced onions, and creamy French dressing or Asian Sesame Vinaigrette.
2. If you'd like, add a protein with chopped, crispy bacon or chopped hard boiled eggs.
3. Toss together well and add the parmesan cheese.
4. Enjoy!



Four-Week Sunday Series
Back to Basics 2024
Four Spiritual Rites of
Thriving

Sun., Jan. 7, 14, 21, & 28,
8 & 10 a.m. In-Person,
Teel Sanctuary, 10 a.m.
Livestream

**Healing Light
Service**

Second Sunday Evening
of Every Month

In-Person Only, 5 p.m.,
Vogt Auditorium

Indoor labyrinth is available
from 4 – 7 p.m. in the
Community Center.

SAVE THE DATE
Easter Service 2024

Sun., March 31,
8 & 10 a.m. In-Person,
Teel Sanctuary,
10 a.m. Livestream

Visit the services page at milehichurch.org



Spiritual Living Classes
Spiritual Enrichment & Deepening

Winter Term Starts Mon, Jan. 15

- Beyond Limits, In-Person
- Prayer as a Spiritual Practice, Online
- The Mystical Path, In-Person
- Powering Your Decisions, In-Person

Featured Classes

Finding Meaning
with Josh Reeves, Thurs., March 7 – 28

A Journey in Gnosticism
with Zemirah Jawierska,
Tues., March 5 – April 2

Visit the classes page at milehichurch.org

SPIRITUAL LIVING CLASSES & WORKSHOPS

JANUARY

#201 Prayer as a Spiritual Practice

Carol Wilke | 8 weeks, Online | Mon., Jan. 15 – March 4 | 5 – 7:30 p.m. | **\$125***

#101 Beyond Limits

Josh Reeves | 8 weeks, In-person | Tues., Jan. 16 – March 5 | 6:30 – 9 p.m. | **\$75***

NEW #710 The Mystical Path

Patty Luckenbach | 8 weeks, In-person | Tues., Jan. 16 – March 5 | 6:30 – 9 p.m. | **\$125***

NEW #302 Powering Your Decisions

Michelle Medrano | 8 weeks, In-person | Thurs., Jan. 18 – March 14 | 6:30 – 9 p.m. | **\$125***

FEBRUARY

Love & Logic® Magic for Early Childhood

Barry Ebert | 4 weeks, In-person | Thurs., Feb. 8 – 29 | 6:30 – 8 p.m. | \$95/single, \$150/couple

The Mourning After: Grieving the Loss of a Loved One

Prayer and Care Center | 8 weeks, Online | Mon., Feb. 12 – April 1 | 6:30 – 9 p.m. | \$75

MARCH

Beyond Divorce

Prayer & Care Center | 8 weeks, In-person | Mon., March 4 – April 22 | 6:30 – 9:30 p.m. | \$75

NEW A Journey in Gnosticism

Zemirah Jazwierska | 5 weeks, In-person | Tues., March 5 – April 2 | 6:30 – 9 p.m. | \$160

NEW Finding Meaning

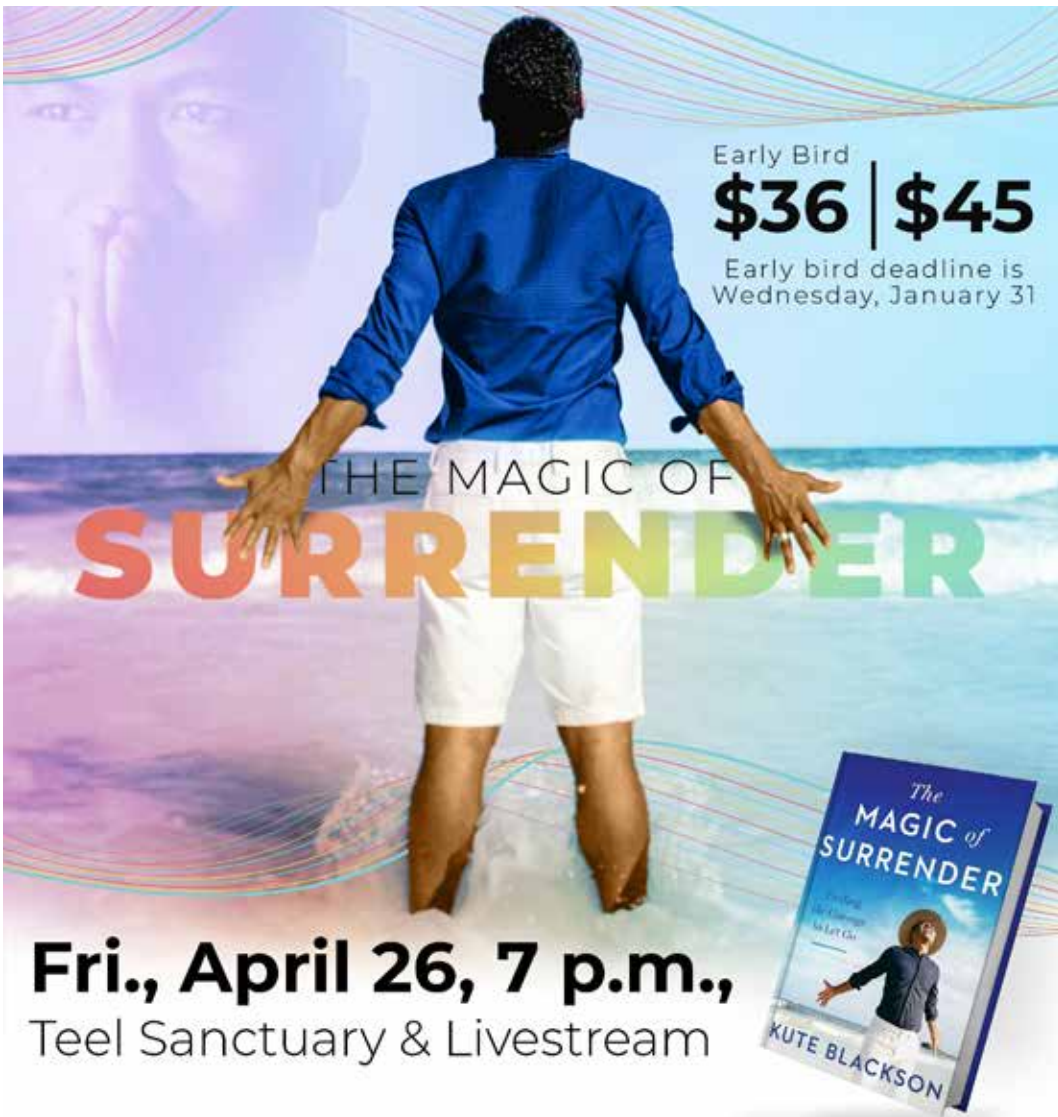
Josh Reeves | 4 weeks, In-person | Thurs., March 7 – 28 | 6:30 – 8:30 p.m. | \$125

ONE TIME
ONLY

SPECIAL
PRICING!

*Thanks to the Mile Hi Foundation Education Pillar for their donation to cover half the cost of **certificated classes** for the winter term.





Early Bird

\$36 | \$45

Early bird deadline is
Wednesday, January 31

THE MAGIC OF **SURRENDER**

Fri., April 26, 7 p.m.,
Teel Sanctuary & Livestream



Transformational teacher and national best-selling author Kute Blackson guides us on a journey of transformation.

Surrender is the invitation to take all limits off of life itself, so magic can happen. More than you can imagine. More than you could ever plan. More than you can fathom. This is the magic!

Kute will inspire you to live surrender and show you the path to tapping into the power of the Universe to manifest your greatness.



Visit the events page
at milehichurch.org

RENOWNED SPEAKER



Wednesday Night Insight

A minister meditation, a practitioner prayer, and time for meditation.

7 p.m., Online @ YouTube and Facebook



The Ordination of Rev. Zemirah Jazwierska Florescence: The Flowering of Divine Light

Sun., Jan. 21, 4 – 6 p.m., Teel Sanctuary



Kirtan Chanting with Scott and Shanti

Wed., Feb. 7, 7 – 9 p.m.,
Vogt Auditorium, Love Offering



Sacred Saturday

Silent Mini Retreat
Sat., Feb. 10, 9 a.m. – 12 p.m., Vogt Chapel

Power of 8 Circles
Sat., April 6, 10 a.m. – 12 p.m.,
Community Center



Personal Care Products and Paper Drive

Sun., Feb. 11,
8 – 11:30 a.m.,
Teel Sanctuary Lobby



Spring Flowers for Summer Lunches

Sun., March 17 & 24,
7:30 – 11:30 a.m.,
Purchase a Plant at the Events Center



2024 Mile Hi Church Initiative Rites of Passage

Our 2024 annual initiative is Rites of Passage. Throughout the year, we will be giving special attention to the rituals of our lives and our community. Rites of Thriving, rites of meaning, rites of release, rites of celebration—we invite you to engage with us this year in mindful recognition of the many passages of life knowing there is a greater Spirit available to guide us along the way.



Spiritual Practices at Mile Hi

Chapel Meditation, Yoga, Tai Chi/Qigong, and the Mile Hi Labyrinth.

Insight Timer

Follow us on Insight Timer, the #1 meditation app.

Mile Hi Ongoing Initiatives

Our ongoing initiatives are precious to us and allows our community to experience traditions and cultures of different faith paths, learn unique perspectives of diverse groups, and implement productive ways of being positive stewards of our Earth.



Diversity and Belonging

Race: The Power of An Illusion

Four Movie Nights
Wed., Feb. 21– March 13,
7 – 8:30 p.m.,
Community Center



Interfaith

Field Trip To Mother Cabrini Shrine

Sun., March 3,
12 – 2:30 p.m.,
Mother Cabrini Shrine



Sacred Earth

Movie Night

Fri., Feb. 16,
7 – 8:30 p.m.,
Community Center

Visit the initiative page at milehichurch.org

INITIATIVES



Prayer & Care Center

A Center of Love, Healing Prayer,
and Compassionate Care

Office Hours:

Mon. – Thurs., 10 a.m. – 2 p.m.
303-232-8851
pcc@milehichurch.org

Prayer Support & Requests

720-974-2261

One-On-One Support Sessions

303-232-8851

Grief Support, Compassionate Care Team, Support Groups

720-974-2234



Memorials

Sandy Troyano
Care Ministry Coordinator
stroyano@milehichurch.org



Healing

Awaken your inner healer with the support
of our ministers and healing community.

Healing Connection Support Group

Meets every Wednesday night online.
A weekly meeting offering practical tools and
inspiration for anyone seeking healing support.



Spirituality in Recovery

Provides life-changing tools to create a new
story for those struggling with dependency
on alcohol, drugs, food, and more.

Rev. Carol Wilke
Recovery Minister
cwilke@milehichurch.org

SPIRITUAL CONTEMPLATION

Rites of Passage

The spiritual life includes its own rites of passage—rituals created for us by life itself that
move us into our next level of becoming.

What is something you want to do more of in 2024?
What is a spiritual insight that has been furthering your growth?
What stories do you tell yourself that impact how you show up?
What do you tell yourself that affirms your abundance?

Affirmation:

I am a creative, thriving being in this thing called life.



Birth - Fifth

Anchored in ritual, we offer age-appropriate teachings of key spiritual concepts.

Youth Church

Sunday class at 8 & 10 a.m. in person.

Middle & High School

We empower our maturing students to freely express themselves and embrace their inner truths.

Sunday Lesson

Class at 10 a.m. in person.

What I Wish My Parents Knew

Neurodiversity

Sun., Jan. 28
11:30 a.m. – 12:30 p.m.,
Vogt Auditorium,
Love Offering



Visit milehichurch.org/youth-family

Spring Eggstravaganza

Sat., April 13,
10 a.m. – 12 p.m.,
Community Center Plaza



Mile Hi Children's Enrichment Center (MHCEC) Preschool

Enriching the early childhood journey with wonder, respect, support, and guidance. We look at the learning environment holistically and co-create curricula with our children and families that reflect their uniqueness.

2023 – 2024 is full. Enroll for next year.
School Year: Aug. 2024 – May 2025

To connect about enrollment or tours, email April Reeves, MHCEC Director, at areeves@milehichurch.org.

Visit milehicec.org



A world in which children freely express their inherent divinity and inner truth.

YOUTH & FAMILY



MileHi Church
It's different here.

OUR VISION

Oneness revealed—a world of
love, peace, and abundance
for all.

OUR MISSION

To serve as a spiritual beacon
for personal empowerment
and global enlightenment.



Printed 1/4/2024 Photo: Todd Graves

Learn about our pathways of
giving at milehichurch.org/give.

9077 W. Alameda Avenue, Lakewood, CO 80226
303-237-8851 | milehichurch.org