

Cover Photos: Bobby Darrt, Mitch Nicklas



**SPRING
2025**

A journey of a thousand miles begins with a single step.
-Lao Tzu



MileHi Church
It's different here.



CELEBRATE LIFE NO MATER WHAT

I was mentored by a minister named Margie Clark—a short redhead filled with kindness, spunk, and consciousness.

While becoming a minister during a time when there weren't many female ministers, Rev. Margie shared that one of her favorite things to do was meeting new people as they walked into her church. She would small talk with them, then see the look of surprise on their faces when they discovered she was the senior minister.

That's something we strive for at Mile Hi Church.

We all have walked the twisty paths of our lives; we all have our spiritual biographies and epiphanies. And what is special about our church is we bring our shared experience, wisdom, and sense of Sacredness, together.

As one community, we celebrate life no matter what. This doesn't mean we deny the negative in life, but we embrace the positive and the good as being so much more, always.

Welcome!



Josh Reeves
Lead Minister

Rev. Zemirah's Spring Zucchini Kugel

Ingredients

- 1 cup sour cream
- 2 lbs/900 g zucchini (2 large, 4-5 medium or 6-7 small)
- 4 large eggs
- 2 tsp fresh lemon zest
- 2-3 Tbsp chopped fresh basil
- 2 Tbsp chopped fresh mint
- ½ cup matzah meal (or almond flour or gluten-free flour)
- 2 tsp kosher salt
- 1-2 tsp black pepper
- 2 Tbsp olive oil

Directions

1. Using a spiralizer, make long noodles out of zucchini.
2. Preheat oven to 350°F & add 2 Tbsp olive oil to a 9×13 baking dish & place in the oven to heat up while you prepare the remaining ingredients.
3. In a large bowl whisk the eggs with lemon zest, mint, basil, salt, pepper & matzah meal. Add zucchini and stir gently until completely mixed.
4. After oil has heated in the pan for 5-10 minutes, add zucchini mixture to pan. Using a spatula or the back of a spoon smooth out the top.
5. Bake for 45-55 minutes or until edges are crispy & the kugel is set in the middle.
6. Once kugel has cooked through, remove from the oven & allow to cool for 20 minutes before cutting. Serve at room temperature or warm.



Sunday Services

8 & 10 a.m. In-Person,
Teel Sanctuary,
10 a.m. Livestream

American Sign Language
Interpretation is available in
person at the 10 a.m. service.

Watch on our Watch Page,
YouTube, and Facebook.

Healing Light Service

Second Sunday Evening
of Every Month

In-Person Only, 5 p.m.,
Vogt Auditorium

Indoor labyrinth is available
from 4 – 7 p.m. in the
Community Center.

Midweek Renewal An Evening of Spiritual Practice

In-Person Only
Every Wednesday
6:40 – 7:35 p.m.,
Vogt Auditorium

Visit the services page at milehichurch.org



ERNEST THE O.W.L.
Oneness | Wholeness | Limitless



Spiritual Living Classes

Spiritual Enrichment & Deepening

Upcoming Classes & Workshops

Inner Child Journey
with Michelle Medrano & Ras Smith

In-Person

Two-Day Workshop

Fri., May 16, 7 – 10:30 p.m. and

Sat., May 17, 10 a.m. – 8:30 p.m., \$100

- Women Mystics
In-Person, Tues., May 6 – June 3
- Emerson
In-Person, Mon., June 16 – July 14
- Self-Discovery Through the Enneagram
In-Person, Fri., June 20 & Sat., June 21

Visit the classes page at milehichurch.org

SERVICES & CLASSES



Mile Hi Insight

A minister meditation, an affirmative prayer, and time for meditation.

Every Wednesday,
9 a.m., Online @ YouTube



World Tai Chi & Qigong Day

Sat., April 26,
9:30 – 10:30 a.m.,
Community Center, Love Offering



The Energetic You and the Labyrinth

Celebrating World Labyrinth Day

Sat., May 3, 12 – 2 p.m.,
Community Center, Love Offering



Mile Hi Concert Series

Sun., May 18: Daniel Nahmod
Sun., June 15: Eddie Watkins Jr.
Sun., Aug. 17: Jesse Powers
Sun., Oct. 12: Jami Lula
Fri., Oct. 24: Gary Lynn Floyd



Sacred Saturday

Sat., May 24, Aug. 16, & Nov. 1,
9 a.m. – 12 p.m.
Vogt Chapel, Love Offering



Ecclesiastical Graduation

Journey of the One and the Many

In-Person & Livestream
Sun., June 1, 5 – 6:30 p.m.,
Teel Sanctuary



Birth - Fifth

Anchored in ritual, we offer age-appropriate teachings of key spiritual concepts.

Youth Church

Sunday class at 8 & 10 a.m. in person.

Middle & High School

We empower our maturing students to freely express themselves and embrace their inner truths.

Sunday Lesson

Class at 10 a.m. in person.

Ice Cream Social

Sun., June 1,
11:15 a.m. – 12:30 p.m.,
The Hi Ground
& Vogt Center



Visit milehichurch.org/youth-family

Summer Teen Camps

Adventure Camp

Ages 11 – 14
Sat., June 21 – Tues., June 24

CSL Summer Teen Camp

Ages 13 – 18
Sat., July 19 – Fri., July 25



Mile Hi Children's Enrichment Center (MHCEC) Preschool

Enriching the early childhood journey with wonder, respect, support, and guidance. We look at the learning environment holistically and co-create curricula with our children and families that reflect their uniqueness.

Aug. 2025 – May 2026; Ages 2 – 5 Years Old
School Hours: 8 a.m. – 3:30 p.m.

To connect about enrollment or tours, email Angela McLean, MHCEC Director, at amclean@milehichurch.org.

Learn more at milehicec.org



A world in which children freely express their inherent divinity and inner truth.

YOUTH & FAMILY



Prayer & Care Center

A Center of Love, Healing Prayer,
and Compassionate Care

Office Hours:

Mon. – Thurs., 10 a.m. – 2 p.m.
303-232-8851
pcc@milehichurch.org

Prayer Support & Requests

720-974-2261

One-On-One Support Sessions

303-232-8851

Grief Support, Compassionate Care Team, Support Groups

720-974-2234



Spirituality in Recovery

Provides life-changing tools to create a new story for those struggling with dependency on alcohol, drugs, food, and more.

Rev. Carol Wilke
Recovery Minister
cwilke@milehichurch.org

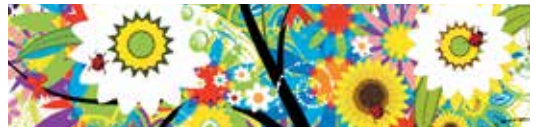
SPIRITUAL PRACTICE

A Prayer for Spring



There is a Chinese proverb that says, "The miracle is not to fly in the air or to walk on water but to walk on the earth."

I recognize the freshness of springtime for it is the very life of God expressing through the bright green new leaves upon the trees. It is the fresh smell of the earth after a gentle rain. I walk upon Earth, this day, giving thanks for her beauty and grace.



Healing

Healing Connection Support Group

Meets every Tuesday night online.

A weekly meeting offering practical tools and inspiration for anyone seeking healing support.

Healing Intention Circles

A Power of Eight experience.

Sat., May 10, 31, & June 28, 10 a.m. – 12 p.m.,
Community Center, Love Offering



Baptisms & Weddings

Rev. Josh Reeves
Lead Minister,
Ceremonies, Rituals, & Rites of Passage
jreeves@milehichurch.org



Memorials

Lee Carlson
Memorial Coordinator
lcarlson@milehichurch.org



Dr. Alan Wolfelt

Death Educator, Author, and Grief Counselor

Honor your unique grief journey. Learn about the touchstones that can support you now and in the future with Dr. Alan Wolfelt, one of North America's leading grief counselors.

Wednesday Talk

Understanding Your Grief

Touchstones for Hope and Healing

Thursday Workshop

The Art of Companioning the Mourner

Caring Versus Curing

In-Person & Livestream

Wed., April 30,

7 p.m., Teel Sanctuary, \$25

In-Person Only

Thurs., May 1,

9 a.m. – 12 p.m., Community Center, \$60

Combination Price for Both Events: \$70

Visit the events page
at milehichurch.org

Mile Hi Ongoing Initiatives

Our ongoing initiatives are precious to us and allows our community to experience traditions and cultures of different faith paths, learn unique perspectives of diverse groups, and implement productive ways of being positive stewards of our Earth.



Sacred Earth

Earth Day Fair

Sun., April 27,

8 a.m. – 12 p.m.,

Community Center



Diversity and

Belonging

Words That Heal

Stories of Identity

Sun., May 4,

11:30 a.m. – 1:30 p.m.,

Vogt Auditorium, Suggested

Love Offering \$15-25



Interfaith

Sacred Sound Meditation

Fri., May 16, 7 – 9 p.m.,

Vogt Auditorium,

Love Offering

Visit the calander
at milehichurch.org



MileHi Church
It's different here.

OUR VISION

Oneness revealed—a world of love, peace, and abundance for all.

OUR MISSION

To serve as a spiritual beacon for personal empowerment and global enlightenment.

Sign up for our weekly email to stay informed at milehichurch.org.



Learn about our pathways of giving at milehichurch.org/give.



9077 W. Alameda Avenue,
Lakewood, CO 80226
303-237-8851 | milehichurch.org

